



YOUR LIFE WILL NEVER  
BE SHORT OF DRAMA

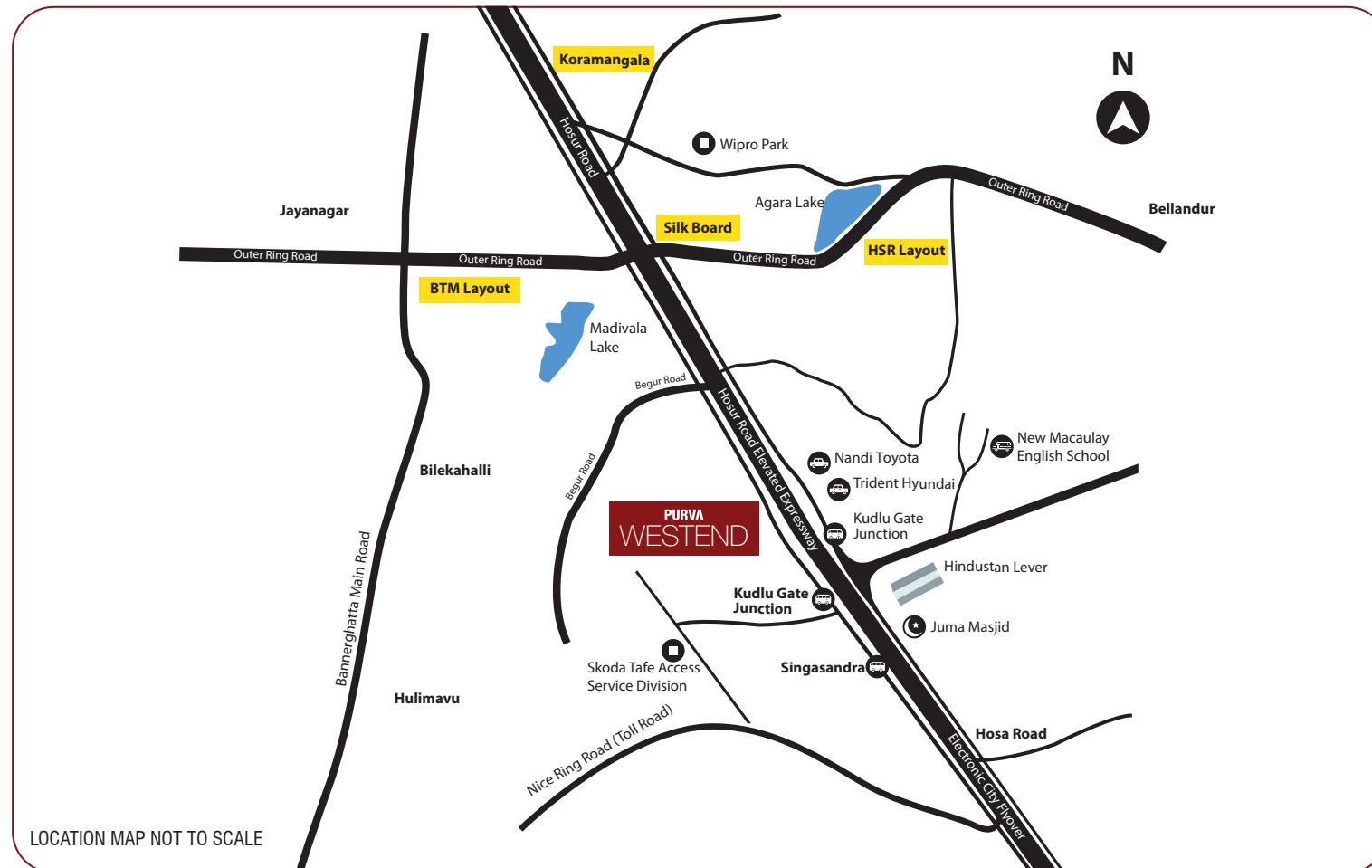
**PURVA  
WESTEND**

Fine living like nowhere else. Just 4 km from Koramangala

**RERA Acknowledgement No.**  
**PR/KN/170729/000394 (Project 1), PR/KN/170729/000236 (Project 2)**

The imagery used in the brochure is indicative of style only. The photographs of the interiors, surrounding views and location may have been digitally enhanced or altered and do not represent actual views or surrounding views. These photographs are indicative only.

## LOCATION MAP



### Location Benefits

- Right on the "High Growth Corridor" of Bangalore i.e. Hosur Main Road. Approximately 3 Kilometers from Central Silk Board Junction at Kudlu gate signal
- Just 10 minutes drive to Electronic City Phase 1, Bangalore's primary IT business zone
- Nestled between posh localities such as Koramangala, HSR Layout, JP Nagar, Jayanagar and Bannerghatta road
- Reputed St. John's Hospital just a short drive away
- Leading schools in the vicinity include Bethany School, Green Wood High International School, Cambridge Public School, Lawrence School, VIBGYOR etc
- Reputed Christ College, Jyothi Nivas College and NIFT (National Institute of Fashion Technology) just a short drive away
- Shopping and leisure destinations nearby include Shopper Stop in Koramangala, Total Mall at Madivala Junction and Forum Mall at Koramangala
- Proposed Metro Phase II, will connect Hosur Road to Bommasandra. (It is believed albeit unconfirmed that a Metro Station may be built very close to the property)
- Knight Frank, a leading International Property Consultant claims that "Kudlu Gate has emerged as a preferred residential micro market on Hosur Road"

Latitude : 12°53'24.2" N  
Longitude : 77°38'18.7" E

Shape and contours of the water bodies may change as the designs evolve. Water bodies are not as per scale. Amenities may be developed in a phased manner. Please contact our representatives for further details



**CLUBHOUSE (CULTURE CLUB)**

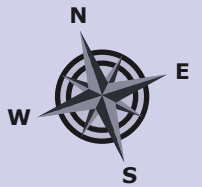
- Pool Table Room / Billiards.
- Table Tennis Room
- Gymnasium
- Yoga Area
- Health Club
- Science Club
- Multipurpose Hall
- Provision For Mini Mart
- Jamming Room
- Lego Room
- Balled Studio Room

**AMENITIES**

- Open Air Amphitheatre
- Outdoor Children's Play Area
- Outdoor one Tennis Court
- Basket Ball Post
- Cricket Practicing Net
- Jogging Track
- Graffiti Wall
- Swimming Pool
- Barbeque lawn and Meditation Lawn
- Old Folks Corner
- Rooftop Sky Gazing Observatory Area
- Cinema Reel Style Walk of Fame
- Piano Theme Paving
- Grand Central Well Lit Landscaped Boulevard Area
- Music in Ground Floor Entrance Lobby Areas

# GROUND FLOOR PLAN TOWER - A, B & C

GRAND CENTRAL BOULEVARD FACING



CITY VIEW

Master Plan



### Area Statement Tower A

UNIT SERIES	TYPE
Ground 001	3B+3T
Ground 002	3B+2T
Ground 003	3B+2T
Ground 004	2B+2T
Ground 006	3B+2T
Ground 007	2B+2T+Study
Ground 008	3B+3T

### Area Statement Tower B

UNIT SERIES	TYPE
Ground 001	3B+3T
**Ground 002	2B+2T+Study
Ground 003	3B+2T
Ground 004	2B+2T
Ground 006	3B+2T
**Ground 007	2B+2T+Study
Ground 008	3B+3T

### Area Statement Tower C

UNIT SERIES	TYPE
Ground 001	3B+3T
**Ground 002	2B+2T+Study
Ground 003	3B+2T
Ground 005	2B+2T
Ground 006	3B+2T
**Ground 007	3B+2T
Ground 008	3B+3T

\*\* The units may differ from tower to tower

# TYPICAL FLOOR PLAN - 1st to 18th TOWER - A, B & C

GRAND CENTRAL BOULEVARD FACING



CITY VIEW

Master Plan



Area Statement Tower A

UNIT SERIES	TYPE
101-1801	3B+3T
102-1802	3B+2T
103-1803	3B+2T
104-1804	2B+2T
105-1805	2B+2T
106-1806	3B+2T
107-1807	3B+2T
108-1808	3B+3T

Area Statement Tower B

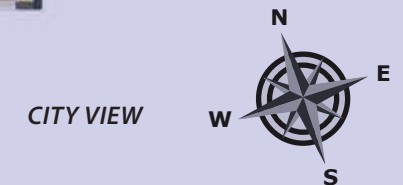
UNIT SERIES	TYPE
101-1801	3B+3T
102-1802	3B+2T
103-1803	3B+2T
104-1804	2B+2T
105-1805	2B+2T
106-1806	3B+2T
107-1807	3B+2T
108-1808	3B+3T

Area Statement Tower C

UNIT SERIES	TYPE
101-1801	3B+3T
102-1802	3B+2T
103-1803	3B+2T
104-1804	2B+2T
105-1805	2B+2T
106-1806	3B+2T
## 107-307	3B+2T
## 407-1807	3B+2T
108-1808	3B+3T

# 19th FLOOR PLAN TOWER - A, B & C

GRAND CENTRAL BOULEVARD FACING



Master Plan



Area Statement Tower A

UNIT SERIES	TYPE
PH 1901	3B+3T
PH 1902	3B+2T
PH 1903	3B+2T
PH 1904	2B+2T
PH 1905	2B+2T
PH 1906	3B+2T
PH 1907	3B+2T
PH 1908	3B+3T

Area Statement Tower B

UNIT SERIES	TYPE
PH 1901	3B+3T
PH 1902	3B+2T
PH 1903	3B+2T
PH 1904	2B+2T
PH 1905	2B+2T
PH 1906	3B+2T
PH 1907	3B+2T
PH 1908	3B+3T

Area Statement Tower C

UNIT SERIES	TYPE
PH 1901	3B+3T
PH 1902	3B+2T
PH 1903	3B+2T
PH 1904	2B+2T
PH 1905	2B+2T
PH 1906	3B+2T
PH 1907	3B+2T
PH 1908	3B+3T

PH stands for Penthouse

# GROUND FLOOR PLAN TOWER - D

CITY VIEW



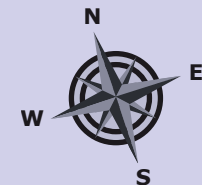
GRAND CENTRAL BOULEVARD FACING

Master Plan



Area Statement Tower D

UNIT SERIES	TYPE
Ground 001	2B+2T
Ground 002	3B+3T
Ground 003	3B+3T
Ground 004	2B+2T
Ground 006	3B+3T
Ground 007	3B+3T
Ground 008	2B+2T



# TYPICAL FLOOR PLAN - 1st to 18th TOWER - D

CITY VIEW

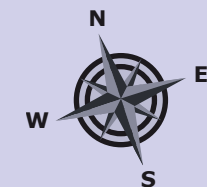


GRAND CENTRAL BOULEVARD FACING



### Area Statement Tower D

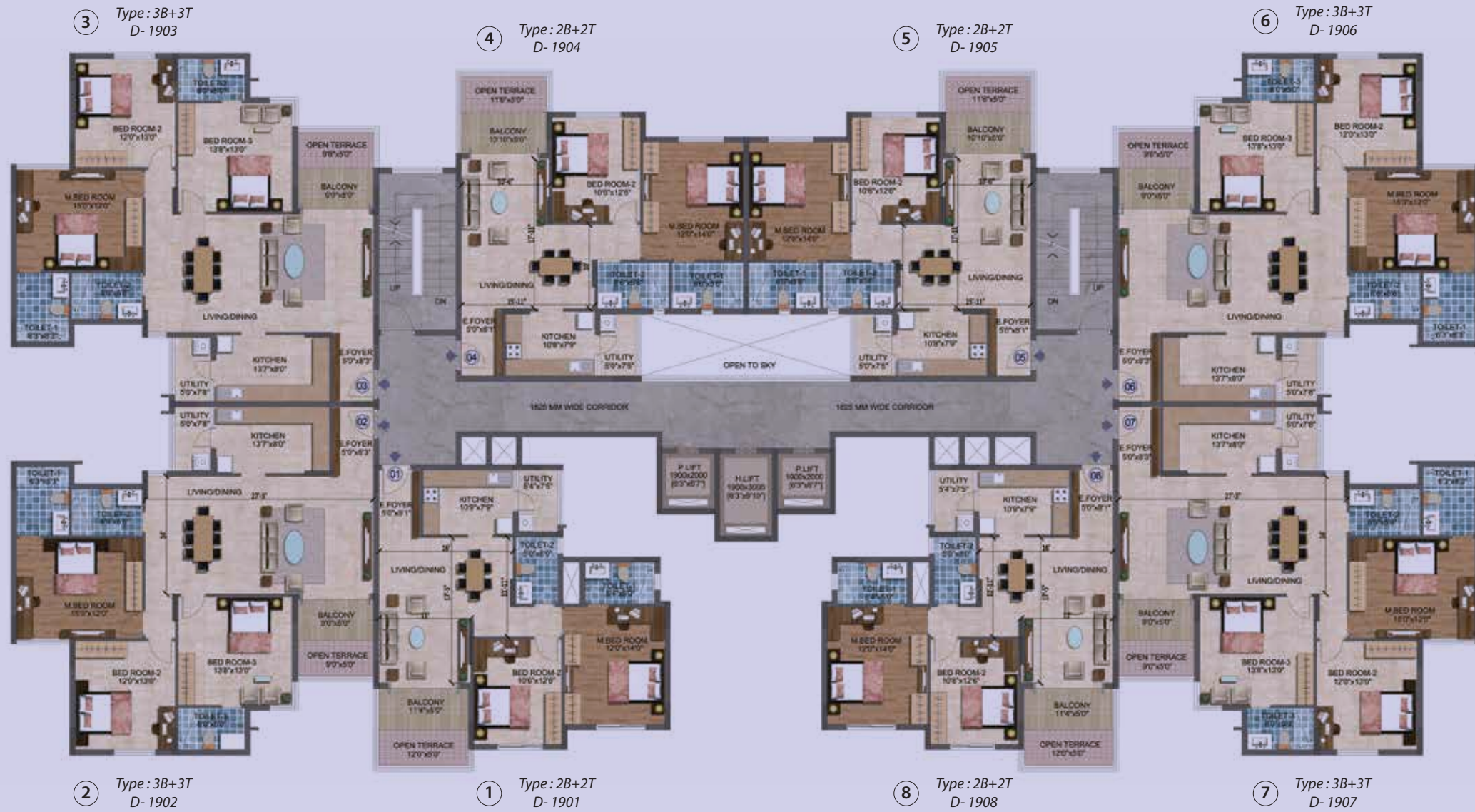
UNIT SERIES	TYPE
101-1801	2B+2T
## 102-302	3B+3T
## 402-1802	3B+3T
103-1803	3B+3T
104-1804	2B+2T
105-1805	2B+2T
106-1806	3B+3T
107-1807	3B+3T
108-1808	2B+2T





# 19th FLOOR PLAN TOWER - D

CITY VIEW



GRAND CENTRAL BOULEVARD FACING

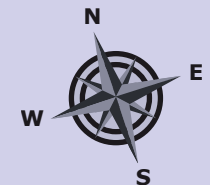
Master Plan



### Area Statement Tower D

UNIT SERIES	TYPE
PH 1901	2B+2T
PH 1902	3B+3T
PH 1903	3B+3T
PH 1904	2B+2T
PH 1905	2B+2T
PH 1906	3B+3T
PH 1907	3B+3T
PH 1908	2B+2T

PH stands for Penthouse



# GROUND FLOOR PLAN TOWER - E

CITY VIEW



GRAND CENTRAL BOULEVARD FACING

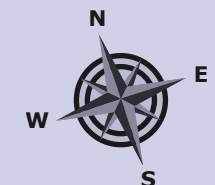
Master Plan



## Area Statement Tower E

UNIT SERIES	TYPE
Ground 001	3B+3T+SR
Ground 004	3B+3T+SR
Ground 006	3B+3T+SR
Ground 009	3B+3T+SR

Each 3B + 3T + SR is a combination of a unit comprising of Servant's Room (SR) and the apartment itself.



# TYPICAL FLOOR PLAN - 1st to 18th TOWER - E

CITY VIEW

⑤ Type: 3B+2T  
E- 105 to E- 1805

⑥ Type: 3B+3T+SR  
E- 106 to E- 1806

⑨ Type: 3B+3T+SR  
E- 109 to E- 1809

④ Type: 3B+3T+SR  
E- 104 to E- 1804

① Type: 3B+3T+SR  
E- 101 to E- 1801



GRAND CENTRAL BOULEVARD FACING

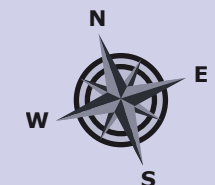
Master Plan



Area Statement Tower E

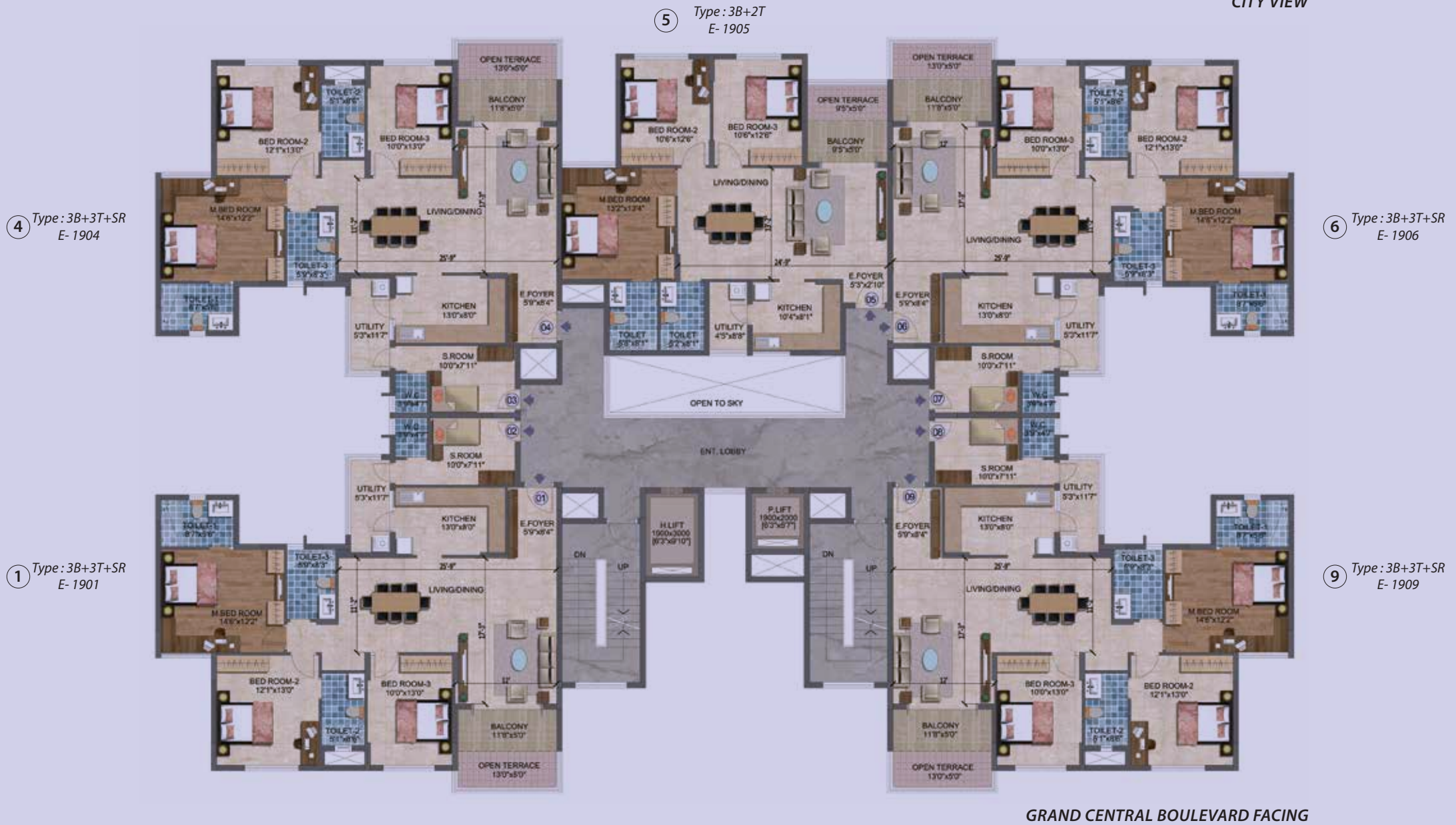
UNIT SERIES	TYPE
101-1801	3B+3T+SR
104-1804	3B+3T+SR
105-1805	3B+2T
106-1806	3B+3T+SR
109-1809	3B+3T+SR

Each 3B + 3T + SR is a combination of a unit comprising of Servant's Room (SR) and the apartment itself.



# 19th FLOOR PLAN TOWER - E

CITY VIEW



GRAND CENTRAL BOULEVARD FACING

Master Plan

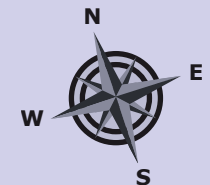


Area Statement Tower E

UNIT SERIES	TYPE
PH 1901	3B+3T+SR
PH 1904	3B+3T+SR
PH 1905	3B + 2T
PH 1906	3B+3T+SR
PH 1909	3B+3T+SR

PH stands for Penthouse

Each 3B + 3T + SR is a combination of a unit comprising of Servant's Room (SR) and the apartment itself.



# TYPICAL UNIT PLANS



2B + 2T



2B + 2T



2B + 2T + Study

# TYPICAL UNIT PLANS



3B + 2T



3B + 2T

# TYPICAL UNIT PLANS



3B + 3T



3B + 3T



Servant's Room



3B + 3T + SR



3B + 3T

Each 3B + 3T + SR is a combination of a unit comprising of Servant's Room (SR) and the apartment itself.

# TYPICAL UNIT PLANS



Servant's Room



3B + 3T



3B + 3T + SR

Each 3B + 3T + SR is a combination of a unit comprising of Servant's Room (SR) and the apartment itself.



# PURAVANKARA®

## Puravankara Limited

130/1, Ulsoor Road, Bangalore - 560042

**Ph: 1860 208 0000**

Site: Purva Westend  
Hosur Main Road,  
Bangalore

**Ph: +91- 80- 44 55 55 55**

www.puravankara.com

sales@puravankara.com

CHENNAI

**Ph: +91- 44- 44 55 55 55**

COIMBATORE

**Ph: +91- 422- 44 55 55 55**

KOCHI

**Ph: +91- 484- 44 55 55 55**

DUBAI

**Ph: 800035703370**

KINGDOM OF SAUDI ARABIA

**Ph: 00- 966- 3- 8946459**



## READY-TO-MOVE-IN PROJECTS ACROSS INDIA

Purva Gold Crest, Off Kanakapura Road, Bangalore  
Purva Highland, Off Kanakapura Road, Bangalore  
Purva Skywood, Off Sarjapur Road, Bangalore  
Sky Condos Series I at the Highlands of Kanakapura Road, Bangalore  
Purva Venezia, Yelahanka, Bangalore  
Purva Oceana, Marine Drive, Kochi  
Purva GrandBay, Marine Drive, Kochi  
Purva Eternity, Kakkanad, Kochi  
Sky Condos Series I at Eternity Kakkanad, Kochi  
Purva Swanlake, OMR, Chennai  
Sky Condos Series I, OMR, Chennai  
Manhattan Condos, Pallikaranai, Chennai  
Purva Bluemont, Singanallur, Trichy Road, Coimbatore

## ON-GOING PROJECTS ACROSS INDIA

Purva Whitehall, On Sarjapur Main Road, Bangalore  
Purva Season, C.V. Raman Nagar, Bangalore  
Purva 270 Degrees, C.V. Raman Nagar, Bangalore  
Purva Sunflower, at Rajajinagar, Bangalore  
Purva Skydale, Off Sarjapur Road, Bangalore  
The Waves, Off Hennur Road, Bangalore  
Purva Palm Beach, Off Hennur Road, Bangalore  
The Sound of Water, Off Bannerghatta Road, Bangalore  
Coronation Square, JP Nagar, Bangalore  
Purva Silversands, Mundhwa, Pune  
Purva Windermere, Pallikaranai, Chennai  
Purva Amaiti, Singanallur, Trichy Road, Coimbatore

## The images used are only indicative

The imagery used in the brochure is indicative of style only. The photographs of the interiors, surrounding views and location may have been digitally enhanced or altered and do not represent actual views or surrounding views. These photographs are indicative only.

Changes may be made during the development and standard fittings and specifications are subject to change without notice. Standard fittings and finishes are subject to availability and vendor discretion. Fittings, finishes and fixtures shown in the images contained in this brochure are not standard and will not be provided as part of an apartment. The information contained herein is believed to be correct but is not guaranteed. Prospective purchasers should make and must rely on their own enquiries. The colours of the buildings are indicative only. This brochure is a guide only and does not constitute an offer or contract.